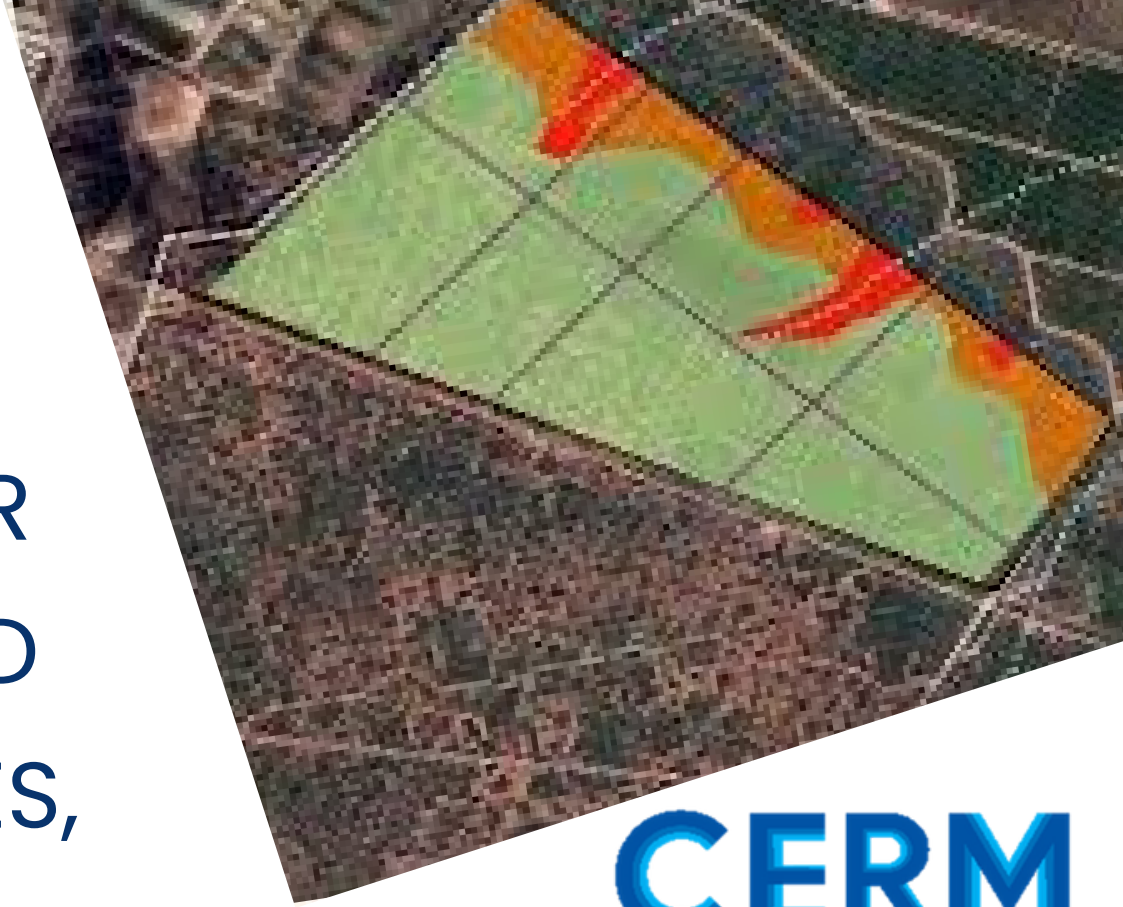




# APPLICATION OF ADVANCED TOOLS FOR ESIA PREPARATION AND REPORTING: GIS, DRONES, AND AI



**CERM**  
CENTER FOR ENVIRONMENTAL & RESOURCE MANAGEMENT



**THE WORLD BANK**

*This initiative is proudly supported by E&S  
Learning Center, Established by the World  
Bank*



**APRIL 19-21, 2025**



**9:00 am - 5:00 pm**



**4th Floor, (Controller of Exam  
Building) CERM, BUET  
and  
Undergraduate Computer  
Lab,  
Civil Engineering Building,  
BUET, Dhaka-1000**

## ✓ **COURSE OUTLINE:**

- Basic fundamentals of GIS
- Understanding Environmental and Social Impact Assessment (ESIA)
- Hands on Demonstration of GIS Tools
- Application of Photogrammetry and LiDAR in Environmental Management
- Application of Google Earth in Valued Environmental Component (VEC) Identification
- Air and Noise Modeling- An Environmental Modeling for ESIA Studies
- Use of AI for Reporting
- Case Studies

## ✓ **RESOURCE PERSONS**

The training sessions will be conducted by distinguished professors, urban planner and GIS specialists from BUET, GIS expert from the World Bank and experts in environmental science and computer science.

## ✓ **TARGET PARTICIPANTS**

- GIS professionals
- Environmental Specialists
- Deputy Manager and Project Director



**MORE INFORMATION:**



[cermoffice@cerm.buet.ac.bd](mailto:cermoffice@cerm.buet.ac.bd)



01326725772